

THROUGH BOLT ANCHOR

AP124



Through bolt anchor designed
for high load capacity and multi-
direction use.



Product brochure
Concrete mount anchor



Installation manual
Concrete mount anchors



Operation manual
Fall arrest anchors



Operation manual
Rope access anchors

Find all related products and resources on our website
kattsafe.com.au

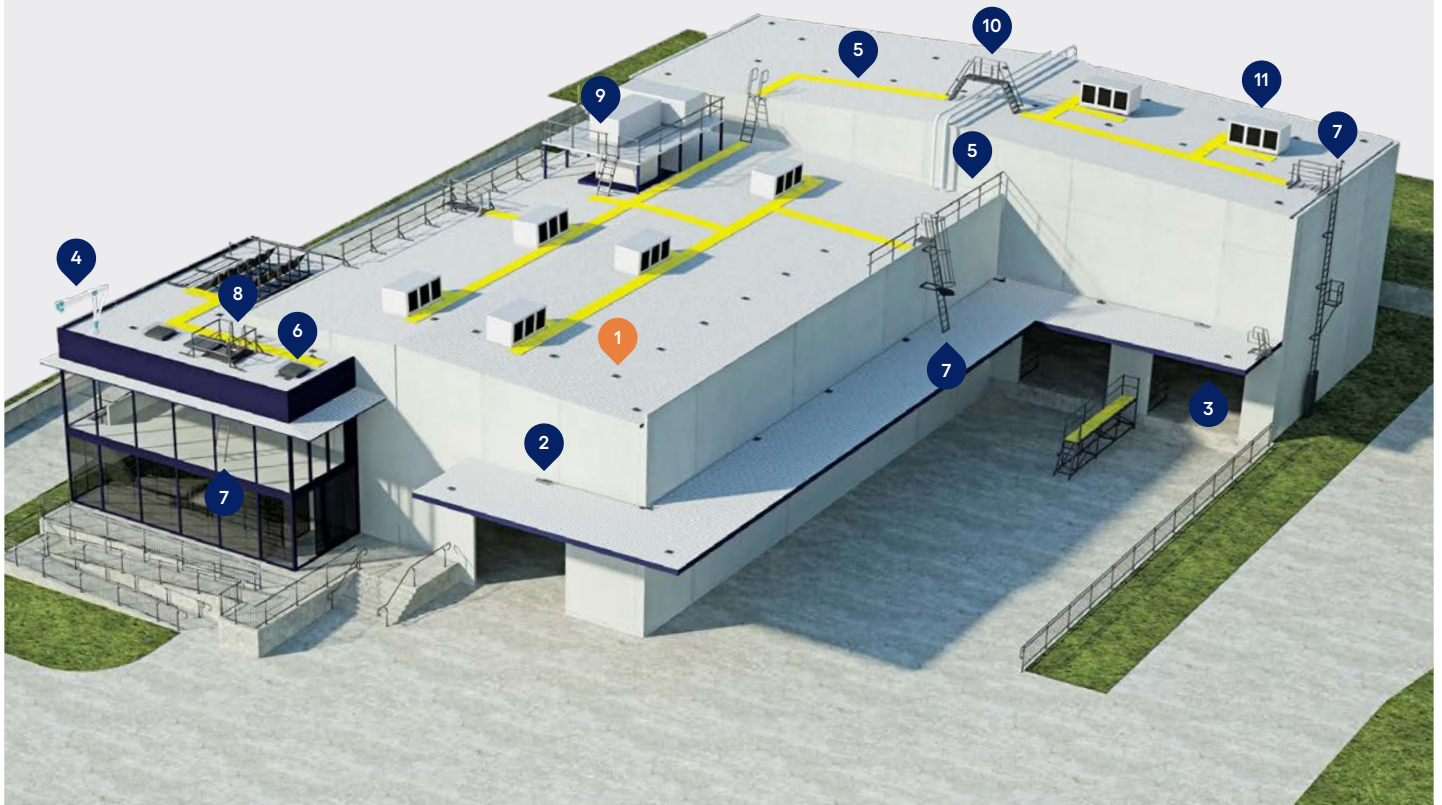
Commercial building height access and fall protection requirements

Kattsafe leads the industry in the design, installation and management of access and fall protection safety systems.

The in-action model demonstrates access and fall protection requirements for a commercial building design. Kattsafe recommendations fulfill current workplace requirements for the safety of building maintenance subcontractors, employees and the general public.

For more information please contact Kattsafe.
kattsafe.com.au

- 1 Anchor points
- 2 Static lines
- 3 Rigid rail
- 4 Davits and needles
- 5 Guardrail and walkway
- 6 Skylight protectors
- 7 Rung ladders
- 8 Access hatches
- 9 Platforms and stairs
- 10 Step ladders
- 11 HVAC platforms



THROUGH BOLT ANCHOR

Through bolt anchor designed for high load capacity and multi-direction use.



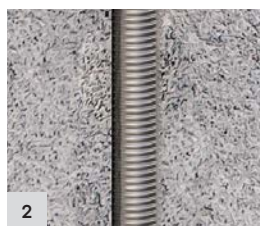
Large eyelet

Designed for easy snaphook attachment and personnel use.



Penetration sealing

EPDM rubber fully seals the penetration in the concrete, preventing any leaks.



Stainless steel bolt

Can be custom made to any length above 300mm



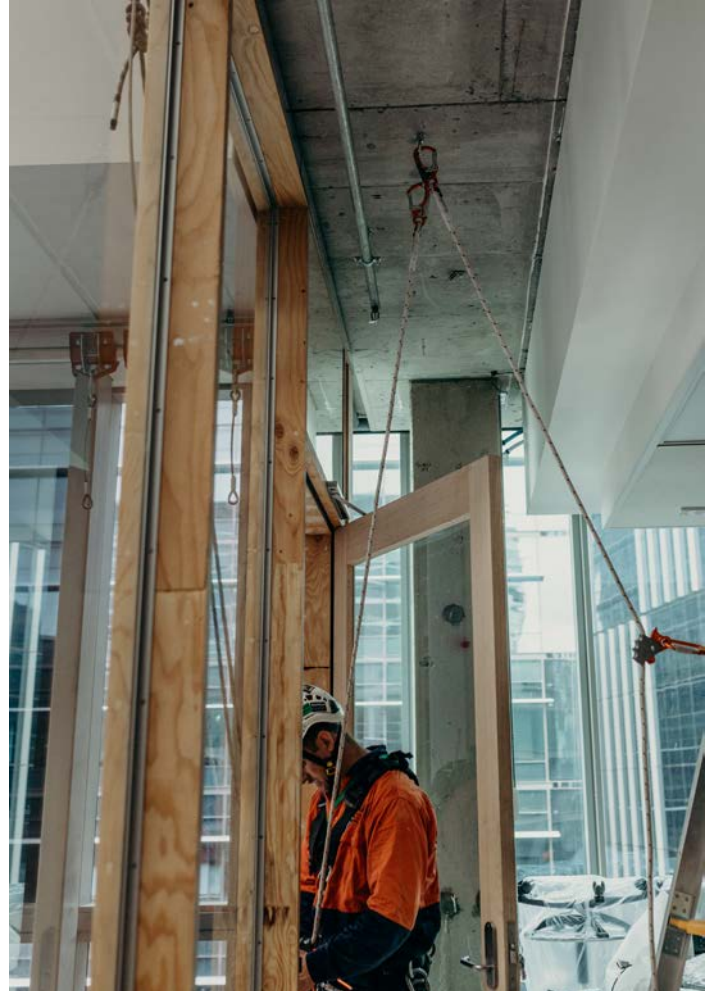
Through bolt anchor designed for high load capacity and multi-direction use. The anchor can be used for overhead applications in direct tension.

The through bolt anchor is designed to be installed through a concrete slab, in overhead or fall arrest applications. The anchor is constructed out of high-strength stainless steel for loads in direct tension or re-belay use.

The through bolt anchor is designed for easy installation, and includes an EPDM seal to seal the penetrations in the concrete, preventing any leaks.

Features and benefits of the system:

- Fall arrest/twin rope access use
- 15kN rated - fall arrest
- 12kN rated - rope access
- High load capacity
- Capable of multi-directional use
- Custom lengths over 300mm can be supplied



TECHNICAL SPECIFICATION

Concrete mount anchor

AP125

Through bolt anchor designed for high load capacity and multi-direction use. System design, supply, layout, installation and certification by a Kattsafe approved installer, as per the manufacturer's installation instructions and current standards.

Materials

316 stainless steel

Dimensions

- Eyebolt diameter: 60mm OD x 35mm ID
- Threaded rod: M16 x 300mm
- Flange: 70mm

Weight

0.7kg

Fixings (refer to installation manual)

Through bolt

Substructure requirements

Minimum concrete thickness: 150mm

- Thickness less than 150mm requires compliance by having structure certified and the anchor proof load tested as per AS/NZS 1891.4:2009.

Rating

- Single person use installed rating – 15kN
- Rope access – 12kN

Compliance

The AP124 through bolt anchor is designed and manufactured in accordance with requirements of Australian and New Zealand Standards AS/NZS 1891.4:2009, AS/NZS 4488.2:1997 and AS/NZS 5532:2013.

Testing

Testing and performance based on Australian and New Zealand Standards AS/NZS 1891.4:2009 and AS/NZS 5532:2013

- Dynamic load test: 15kN
- Static load test: 15kN

Product warranty

10 Years from date of purchase subject to correct installation. Use and maintenance to be in accordance with manufacturer's specifications and recommendations.

Inspection and maintenance

The AP124 through bolt anchor needs to be checked and recertified by a competent height safety inspector every 12 months for non-corrosive environments, or 6 monthly for corrosive or harsh environments. (To be determined by a competent person depending on the severity of surrounding conditions.) Refer installation manual.

Important note

- Device is for personnel use only.
- Failure to supply and/or install proprietary product in accordance with above standards and codes, specifications and installation/usage guidelines voids complete system certification and/or warranty.

WARRANTY INFORMATION

Warranty period on this system:
10 years from date of purchase

Should you have a warranty claim as a result of a defect the following procedure must be followed:

Identify the following information:

- The product/system name and code number.
- The date of purchase/installation.
- Installation company details.
- The installation identification number.
- The name of the company using this system.
- A description of the defect/warranty claim.
- The periodic system maintenance report.

Forward the above information to sales@kattsafe.com.au or contact technical helpline, 1300 301 755.

Terms and conditions

All warranty claims must be made in writing within 14 days of the appearance of the defect.

Incorrect installation or work done by a non accredited Kattsafe system installer will void all warranty rights.

Systems that have been installed using non proprietary equipment will void all warranties.

System roof/cladding and concrete penetration seals are not covered in this warranty.

Systems/components that have not been maintained in accordance with manufacturer's/legislative requirements will void warranty.

Systems used by incompetent persons or use with non compatible accessories ie. harness gear, lanyards, travellers, fall arrestors etc. will void warranty.

Systems/components used for purposes other than their intended use will void warranty.

General wear and tear is expected and will depend on the frequency of use and is not covered by warranty.



Product brochure
Through bolt anchor



Installation manual
Concrete mount anchors



Operation manual
Fall arrest anchors



Operation manual
Rope access anchors



QMS Certification
ISO 9001:2015

Find all related products and resources on our website.
kattsafe.com.au

Kattsafe

Height access
and fall protection

1029 Mountain Highway
Boronia Victoria 3155
Australia

1300 301 755
sales@kattsafe.com.au
kattsafe.com.au