

# TOP MOUNT ANCHOR

AP130



---

## Top mount anchors for maintenance personnel working at heights utilising a harness and fall protection system.



---

**Product brochure**  
Top mount anchor



---

**Installation manual**  
Top mount anchor



---

**Operation manual**  
Top mount anchor

Find all related products and resources on our website  
[kattsafe.com.au](https://kattsafe.com.au)

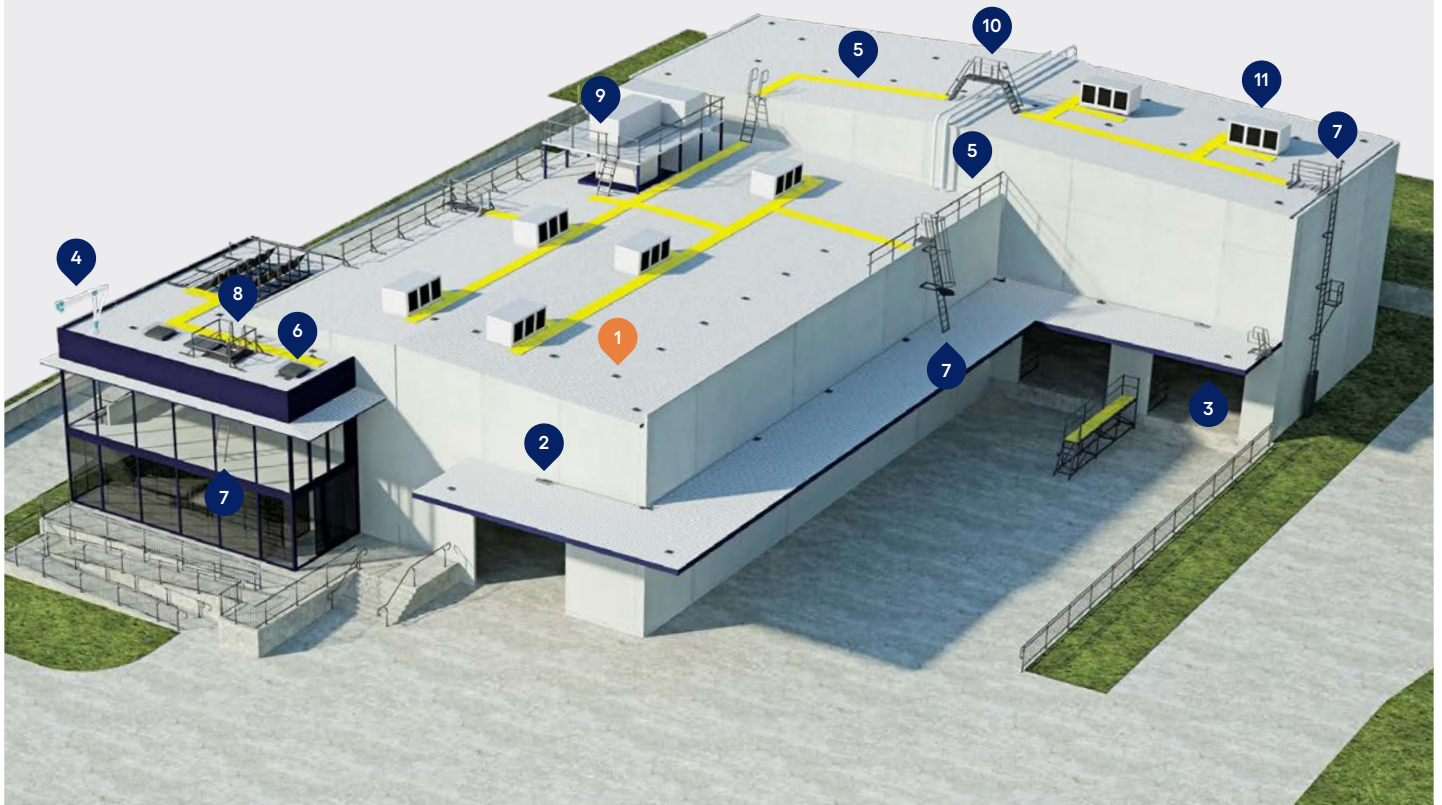
## Commercial building height access and fall protection requirements

Kattsafe leads the industry in the design, installation and management of access and fall protection safety systems.

The in-action model demonstrates access and fall protection requirements for a commercial building design. Kattsafe recommendations fulfill current workplace requirements for the safety of building maintenance subcontractors, employees and the general public.

For more information please contact Kattsafe.  
[kattsafe.com.au](http://kattsafe.com.au)

- 1 Anchor points
- 2 Static lines
- 3 Rigid rail
- 4 Davits and needles
- 5 Guardrail and walkway
- 6 Skylight protectors
- 7 Rung ladders
- 8 Access hatches
- 9 Platforms and stairs
- 10 Step ladders
- 11 HVAC platforms





# TOP MOUNT ANCHOR

Top mount fall arrest anchor designed for simple, quick installation and load dissipation and absorption.



**1** Profiled dome

Ensures no interference with roof deck rib, and allows free rotation of the swivelling eyelet.



**2** Swivel eyelet

Ensures unlimited user area and no snap hook roll-out, with a large connection eye for easy attachment.



**3** Universal stainless steel plate

Robust stainless steel plate is suited for harsh environments, and multiple fixing locations allow for installation to various roof decks.



**4** Screw and rivet fixing

Options to fix the anchor to the roof deck using high-strength screws and rivets, reducing install time.



**5** Energy absorbing eyelet

Absorbs energy when a fall occurs, reducing the load on the operator and roof structure.



**6** Lightweight

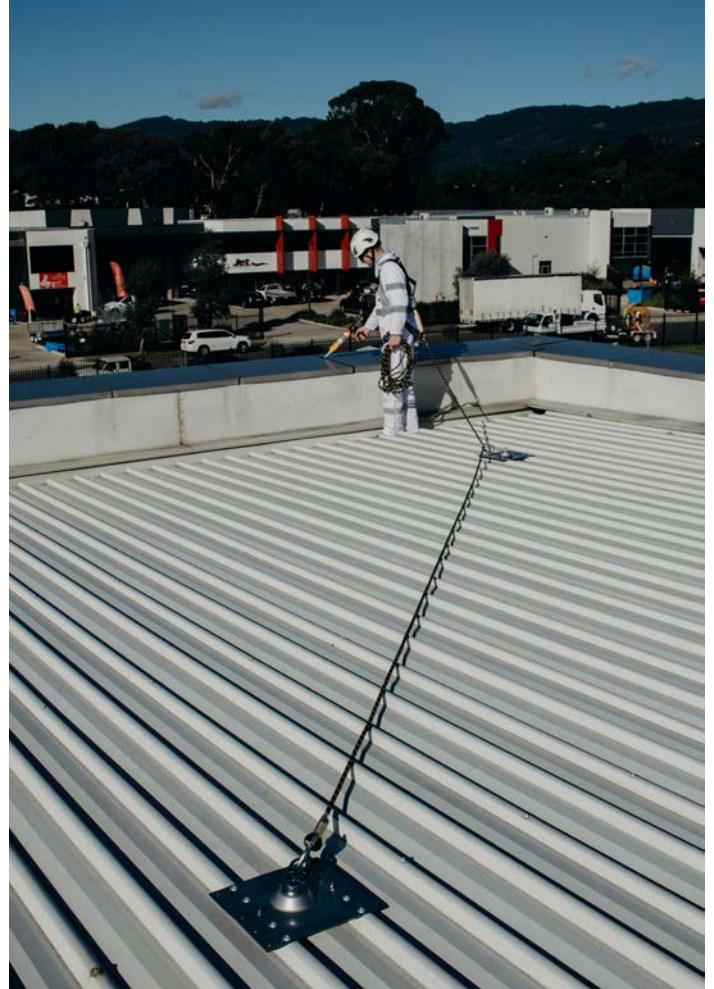
Only weighing 1.5kg, it's easy to handle and operate without providing extra load on the roof.

Lightweight, high strength top mount anchor for fall arrest use. Designed to be installed with rivets only and connected to 2 roof sheets for added strength.

The top mount anchor is ideally suited to maintenance personnel working at heights utilising a harness and lanyard fall protection system. The 15kN fall arrest rated anchor incorporates a unique energy absorbing swivel eye lanyard attachment point, eliminating snap hook roll-out and providing uniform load distribution to the anchor plate and allowing fixture to lighter structures and roof decks.

**Features and benefits of the system:**

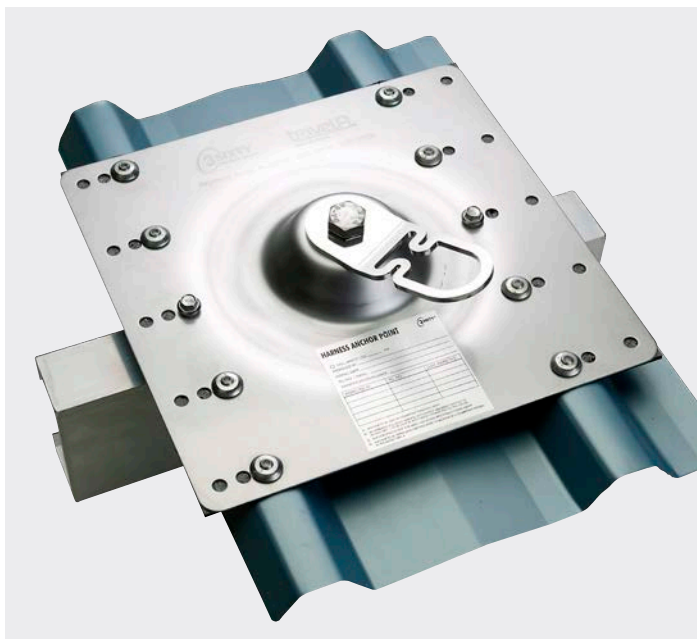
- Fall arrest use.
- 15kN rated.
- Simple, quick installation.
- Low aesthetic profile.
- Swivel eyelet with load-absorbing design eliminates snap hook roll-out.
- Universal plate allows the anchor to be mounted on various roof decks.
- Uniform load distribution in the event of a fall.
- Can be used as a rope access anchorage in the event of an emergency rescue only.
- Weight: 1.4kg



# TOP MOUNT ANCHOR CONFIGURATIONS

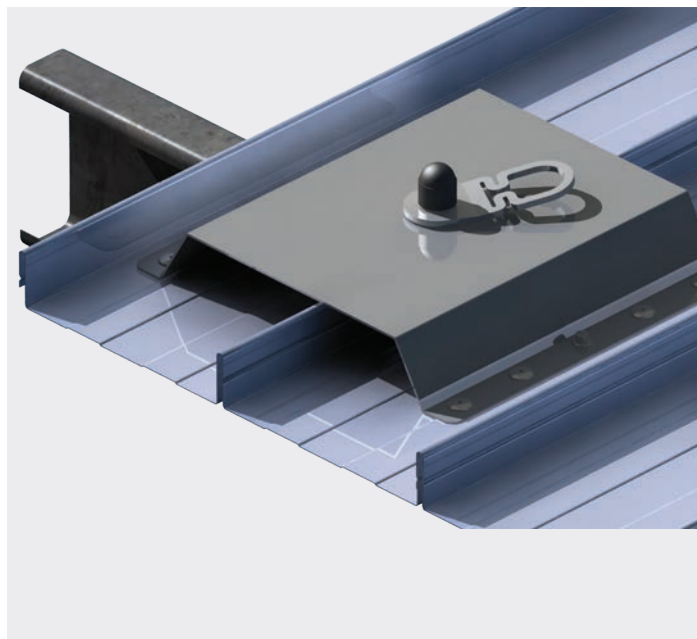
## AP130A Top mount anchor

Top mount anchor designed to be installed onto normal profiled roof decks.



## AP130T Top mount anchor – top hat plate

Top mount anchor designed to be installed into flat roof sheet pans.





---

# TECHNICAL SPECIFICATION

## Top mount anchor

### AP130

The top mount anchor incorporates an energy absorbing swivel eye attachment point connected to the profiled stainless steel base plate, to prevent snap hook roll-out. System design, supply, layout, installation and certification by a Kattsafe approved installer, as per the manufacturer's installation instructions and current standards.

#### Materials

- Base plate: profile stainless steel
- Swivel eye: profiled stainless steel

#### Dimensions

- Total height: 50mm (includes eyelet)
- Overall size: 290 x 285mm

#### Weight

1.05kg

#### Fixings (refer to installation manual)

- Timber purlin fixing: 14g x 75mm type 17 tek screws
- Metal purlin fixing: 14g x 75mm self-drilling tek screws
- Metal roof deck fixing: 8mm structural bulb type rivets

#### Rating

- Fall arrest use: 15kN
- User weight limit: 120kg (user and equipment)
- Can be used as a rope access anchorage in the event of an emergency rescue only.

#### Compliance

The top mount anchor is designed and manufactured to conform to requirements of Australian and New Zealand Standard AS/NZS 5532:2013 and relevant statutory WHS Codes of Practice/Guidelines.

#### Testing

Testing and performance based on requirements of Australian and New Zealand Standard AS/NZS 5532:2013.

- Dynamic load tested: 15kN
- Static load tested: 15kN

#### Product warranty

10 years from date of purchase subject to correct installation. Use and maintenance to be in accordance with manufacturer's specifications and recommendations. (This excludes wearing parts).

#### Inspection and maintenance

Inspection and certification required every 12 months by competent person in accordance with manufacturer's specifications and requirements of Australian and New Zealand Standard AS/NZS 1891.4:2009 Section 9 (refer installation manual).

#### Important note

Failure to supply and/or install proprietary product in accordance with above standards and codes, specifications and instructions voids complete system certification and/or warranty.

---

# WARRANTY INFORMATION

Warranty period on this system:  
10 years from date of purchase

**Should you have a warranty claim as a result of a defect the following procedure must be followed:**

Identify the following information:

- The product/system name and code number.
- The date of purchase/installation.
- Installation company details.
- The installation identification number.
- The name of the company using this system.
- A description of the defect/warranty claim.
- The periodic system maintenance report.

Forward the above information to [sales@kattsafe.com.au](mailto:sales@kattsafe.com.au) or contact technical helpline, 1300 301 755.

## Terms and conditions

All warranty claims must be made in writing within 14 days of the appearance of the defect.

Incorrect installation or work done by a non accredited Kattsafe system installer will void all warranty rights.

Systems that have been installed using non proprietary equipment will void all warranties.

System roof/cladding and concrete penetration seals are not covered in this warranty.

Systems/components that have not been maintained in accordance with manufacturer's/legislative requirements will void warranty.

Systems used by incompetent persons or use with non compatible accessories ie. harness gear, lanyards, travellers, fall arrestors etc. will void warranty.

Systems/components used for purposes other than their intended use will void warranty.

General wear and tear is expected and will depend on the frequency of use and is not covered by warranty.





---

**Product brochure**  
Top mount anchor



---

**Installation manual**  
Top mount anchor



---

**Operation manual**  
Top mount anchor



---

**QMS Certification**  
ISO 9001:2015

Find all related products and resources on our website.  
[kattsafe.com.au](https://kattsafe.com.au)

# Kattsafe

Height access  
and fall protection

1029 Mountain Highway  
Boronia Victoria 3155  
Australia

1300 301 755  
[sales@kattsafe.com.au](mailto:sales@kattsafe.com.au)  
[kattsafe.com.au](https://kattsafe.com.au)