

# GUARDRAIL & WALKWAY



---

Kattsafe guardrail and walkway provides fall protection and high strength safe designated access to roof mounted plant and equipment.



---

**Product brochure**  
Guardrail and walkway



---

**Installation manual**  
Guardrail



---

**Installation manual**  
Walkway

Find all related products and resources on our website  
[kattsafe.com.au](http://kattsafe.com.au)

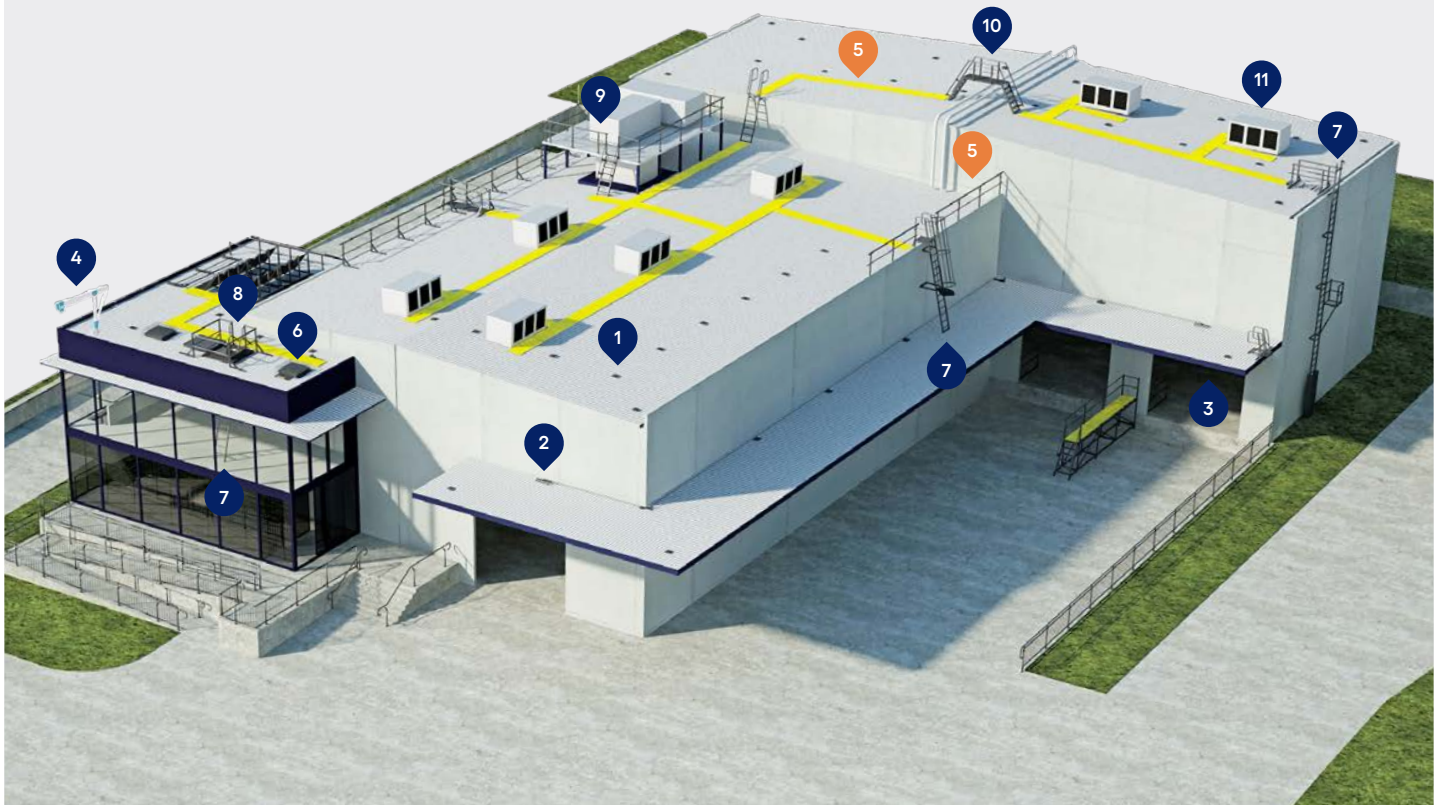
## Commercial building height access and fall protection requirements

Kattsafe leads the industry in the design, installation and management of access and fall protection safety systems.

The in-action model demonstrates access and fall protection requirements for a commercial building design. Kattsafe recommendations fulfill current workplace requirements for the safety of building maintenance subcontractors, employees and the general public.

For more information please contact Kattsafe.  
[kattsafe.com.au](http://kattsafe.com.au)

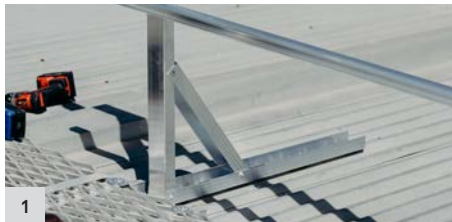
- 1 Anchor points
- 2 Static lines
- 3 Rigid rail
- 4 Davits and needles
- 5 **Guardrail and walkway**
- 6 Skylight protectors
- 7 Rung ladders
- 8 Access hatches
- 9 Platforms and stairs
- 10 Step ladders
- 11 HVAC platforms





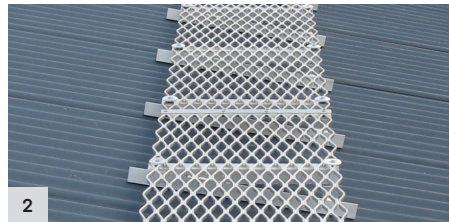
# GUARDRAIL & WALKWAY

Lightweight guardrail and walkway providing high strength safe access and fall protection solutions for workers at heights.



## Lightweight construction

All guardrail and walkway components are manufactured from high strength aluminium, ensuring handling and installation is simple.



## Knurled walkway

The small grooves on the walkway allow a better grip, creating a non-slip surface to walk on.



## Pre-fabricated modular guardrail

The modular guardrail components and fixings allow for a fully adjustable system to fit varying applications and on-site requirements.



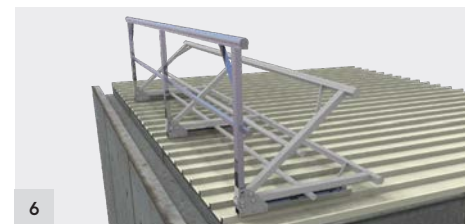
## Low profile

The guardrail and walkway has an unobtrusive appearance with the option of powder coating to blend in.



## Minimal components

Reducing on-site labour and removing the need for any specialist tools or equipment with easy to use, minimal components.



## Additional option for a fold down design

Provides the opportunity to be stored out of sight when not in use, eliminating visual impact in architectural sensitive locations.

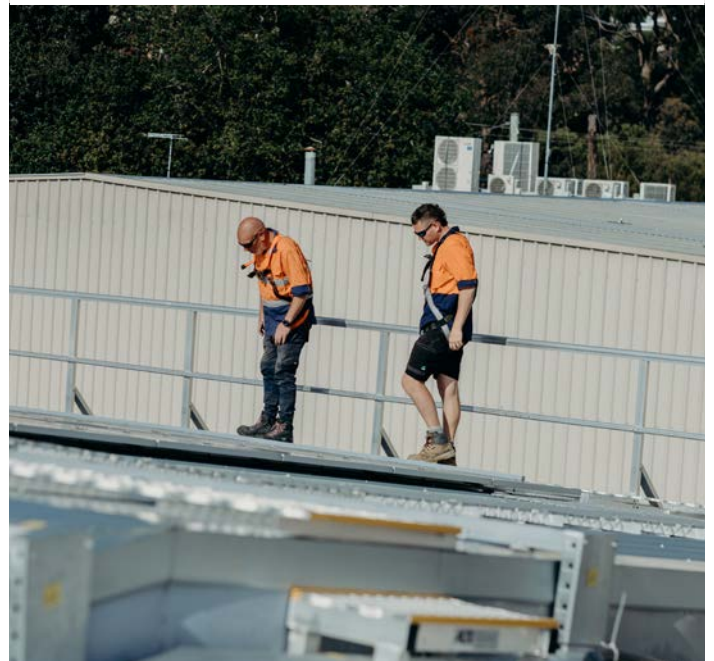
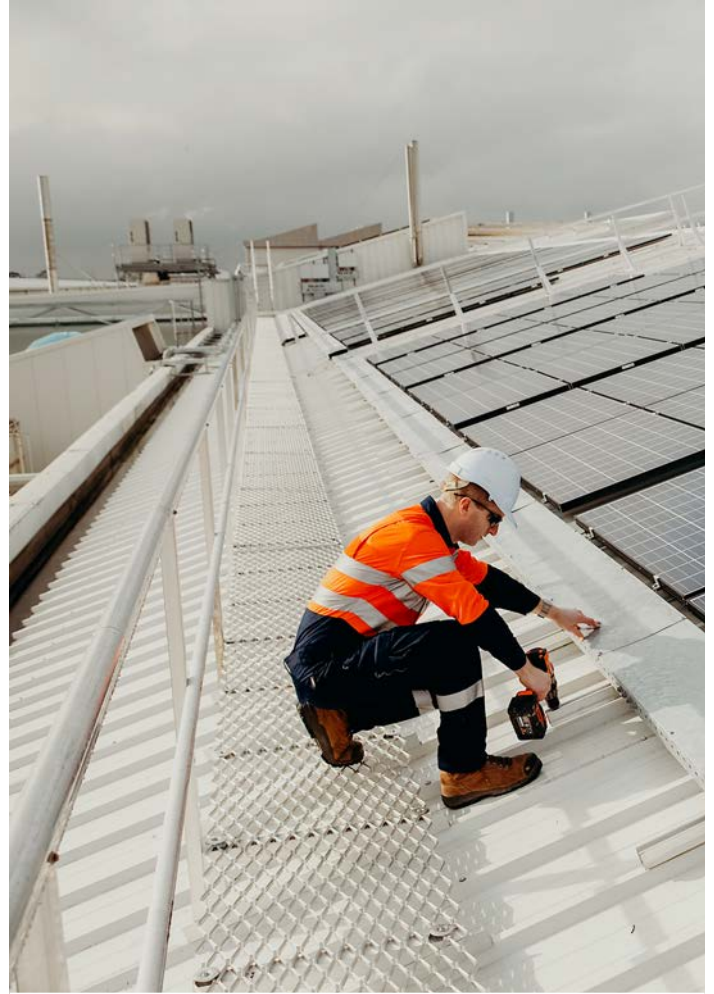
High strength, full modular guardrail and walkway ensuring rapid and easy installation.

Guardrail and walkway provide designated access for maintenance workers to roof mounted plant and equipment.

The low profile design ensures little to no visual impact on large to small scale roofs, and as an additional option, the guardrail can be designed so that it can be folded down out of the way after use.

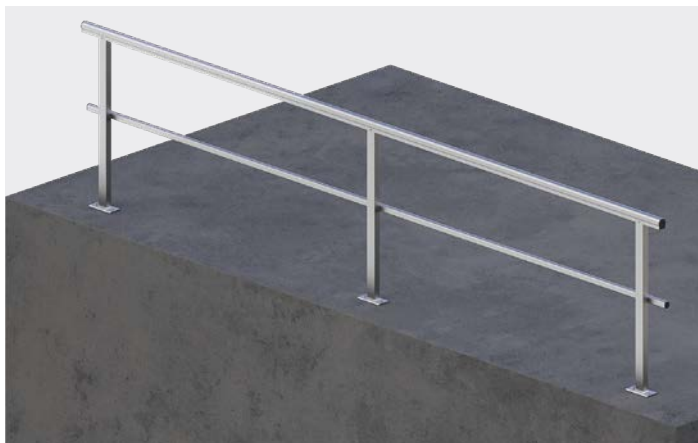
**Features and benefits of the system:**

- Prefabricated modular system for a simple, rapid installation.
- Fully adjustable/adaptable fixtures & fittings no on site welding required.
- Multi-directional suiting all roof applications.
- Suits varied mounting options.
- Minimal components reducing on site labour.
- High strength aluminium construction making it lightweight and user friendly.
- Unobtrusive appearance with option for powdercoating to blend in with surroundings.

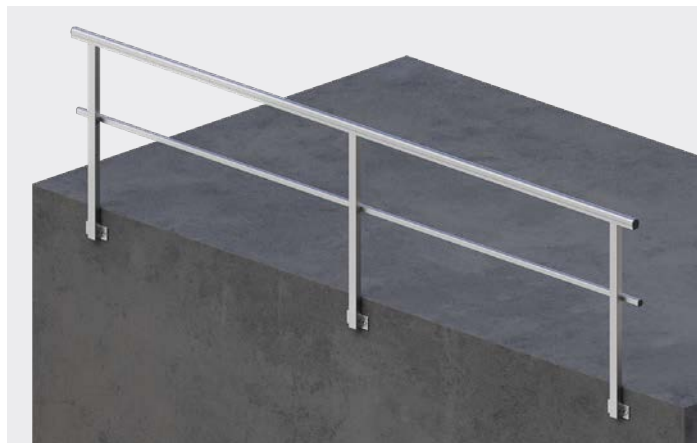


# GUARDRAIL & WALKWAY CONFIGURATIONS

GW1 Guardrail with baseplate - top mount



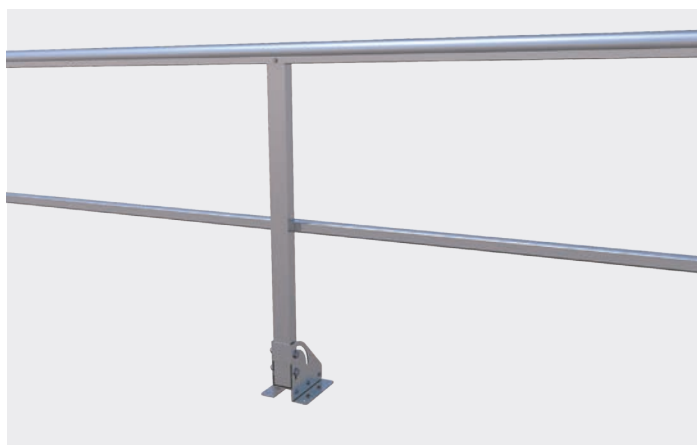
GW2 Guardrail with baseplate - side mount



GW3 Guardrail - metal deck mount



GW31 Fold down guardrail - concrete mount



GW32 Fold down guardrail - metal deck mount



GW4 Walkway with guardrail one side - metal deck mount





---

**GW5 Walkway with guardrail one side - levelled metal deck mount**



---

**GW6 Walkway with guardrail both sides - metal deck mount**



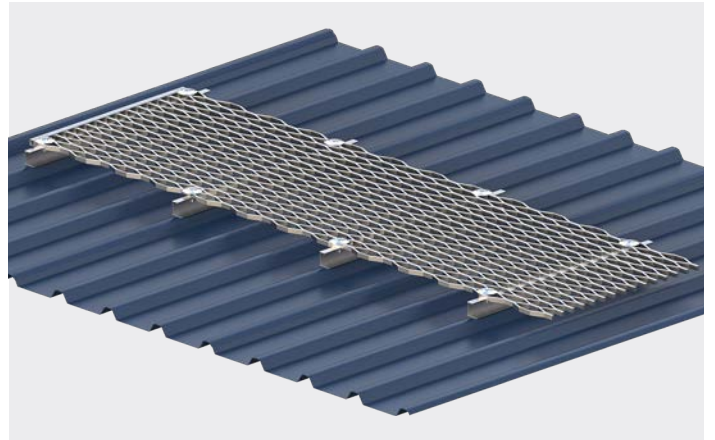
---

**GW7 Walkway with guardrail both sides - levelled metal deck mount**



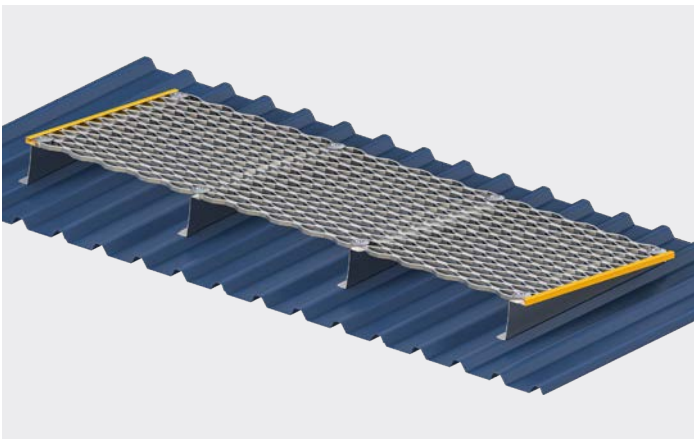
---

**GW8 Walkway**



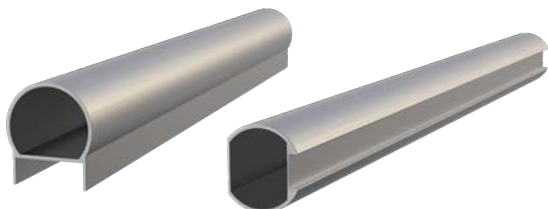
---

**GW9 Walkway - levelled**



# GUARDRAIL COMPONENTS

Handrail and kneerail



Adjustable corner



End caps



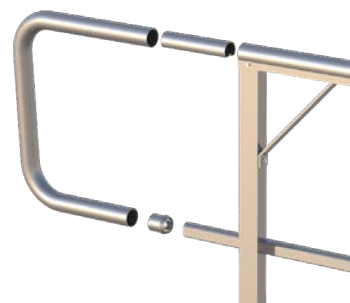
Post kit



Self closing gate - adjustable



Closure bend



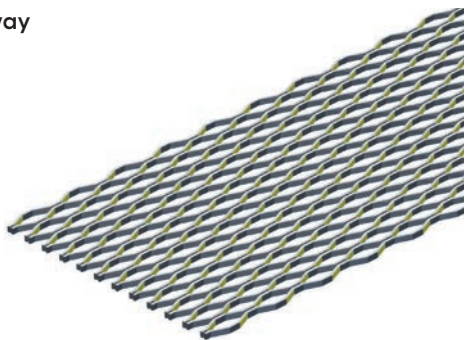
Fixings





# WALKWAY COMPONENTS

Aluminium walkway



C - Channel batten



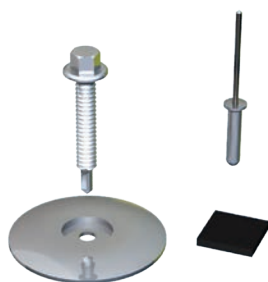
Folded batten bracket



Joiner bar



Fixings



---

# TECHNICAL SPECIFICATION

## Guardrail

Kattsafe guardrail for fall protection and safe access at heights. System design, supply, layout, installation and certification by a Kattsafe approved installer, as per the manufacturer's installation instructions and current standards.

## Materials

- Post assemblies, hand and kneerails: extruded high grade structural (6106/T6) aluminium with options for powder coating.
- Universal elbows and end caps: die cast aluminium

## Dimensions

- Handrail component: 50mm diameter section mounted 900mm to 1100mm above floor surface
- Kneerail component: 40mm diameter section mounted 450mm below handrail
- Post component: 60mm x 40mm RHS section, post length 950mm to 1100mm above floor surface

## Weight

2kg/m aprox.

## Fixings (refer to installation manual)

- Metal fixing: M12 bolt set
- Concrete fixing (min 25 MPA): M12 / 85mm mechanical concrete anchor
- Metal roof deck fixing (min 0.42 BMT): 5mm construction grade bulb type rivets
- Handrail to post fixing: 12-14 / 20mm tek screw
- Kneerail to post fixing: 12-14 / 50mm tek screw

## Rating

1200N applied horizontally mid span between posts of 2.0m spacing.

## Compliance

Kattsafe guardrail is designed and manufactured to conform with Australian Standards AS 1657:2018 / AS/NZS 1892:1996 and relevant statutory OHS Codes of Practice/Guidelines.

## Testing

- Testing and performance based on requirements of Australian Standard AS 1657:2018.
- Static load tested – 1.2kN applied horizontally on handrail component mid span between posts at 2.0m spacing.

## Product warranty

10 Years from date of purchase subject to correct installation. Use and maintenance to be in accordance with manufacturer's specifications and recommendations. (This excludes wearing parts).

## Inspection and maintenance

Visual inspection for any damage or loose fixings must be done periodically and prior to use. Basic wear and tear preventative maintenance is recommended, as per manufacturer's specifications and recommendations.

## Important note

- Failure to supply and/or install proprietary product in accordance with above standards and codes, specifications and instructions voids complete system certification and/or warranty.
- Post spacing: maximum 2.2m intervals

## Walkway

Kattsafe walkway installed on battens using bulb type self sealing rivets and EPDM dissimilar metal seal. System design, supply, layout, installation and certification by a Kattsafe approved installer, as per the manufacturer's installation instructions and current standards.

## Materials

- Walkway : mill finish, expanded aluminium grating
- Roof battens: mill finish profiled aluminium truss system

## Dimensions

- Walkway grating length: 3000mm/6000mm
- Walkway grating width: 600mm
- Walkway grating thickness: 13mm

## Weight

- 4.5 kg per linear metre (6.4kg per m<sup>2</sup>)
- 25kg per 6m length

## Fixings (refer to installation manual)

- Walkway to batten: 12-14 x 35 stainless self drill screw
- Batten to roof deck: 5mm construction grade bulb type rivet
- EPDM seal / dissimilar metal barrier

## Rating

Batten spacing (mm)	Max load capacity (kPa)	Max point load on walkway (kg)
670	5	110
700	2.5	110

## Compliance

Kattsafe walkway is designed to comply with Australian Standard AS 1657:2018 and relevant statutory WHS Codes of Practice/Guidelines.

## Testing

- Testing and performance based on requirements of Australian Standard AS 1657:2018.
- Slip resistance tested to AS4586 (Classification - R11).

## Product warranty

10 Years from date of purchase subject to correct installation. Use and maintenance to be in accordance with manufacturer's specifications and recommendations. (This excludes wearing parts).

## Inspection and maintenance

Visual inspection for any damage or loose fixings must be done periodically and prior to use. Basic wear and tear preventative maintenance is recommended, as per manufacturer's specifications and recommendations.

## Important note

- Failure to supply and/or install proprietary product in accordance with above standards and codes, specifications and instructions voids complete system certification and/or warranty
- Maximum batten increments: 700mm



---

# WARRANTY INFORMATION

Warranty period on this system:  
10 years from date of purchase

**Should you have a warranty claim as a result of a defect the following procedure must be followed:**

Identify the following information:

- The product/system name and code number.
- The date of purchase/installation.
- Installation company details.
- The installation identification number.
- The name of the company using this system.
- A description of the defect/warranty claim.
- The periodic system maintenance report.

Forward the above information to [sales@kattsafe.com.au](mailto:sales@kattsafe.com.au) or contact technical helpline, 1300 301 755.

## Terms and conditions

All warranty claims must be made in writing within 14 days of the appearance of the defect.

Incorrect installation or work done by a non accredited Kattsafe system installer will void all warranty rights.

Systems that have been installed using non proprietary equipment will void all warranties.

System roof/cladding and concrete penetration seals are not covered in this warranty.

Systems/components that have not been maintained in accordance with manufacturer's/legislative requirements will void warranty.

Systems used by incompetent persons or use with non compatible accessories ie. harness gear, lanyards, travellers, fall arrestors etc. will void warranty.

Systems/components used for purposes other than their intended use will void warranty.

General wear and tear is expected and will depend on the frequency of use and is not covered by warranty.



---

**Product brochure**  
Guardrail and walkway



---

**Installation manual**  
Guardrail



---

**Installation manual**  
Walkway



---

**QMS Certification**  
ISO 9001:2015

Find all related products and resources on our website.  
[kattsafe.com.au](https://kattsafe.com.au)

# Kattsafe

Height access  
and fall protection

1029 Mountain Highway  
Boronia Victoria 3155  
Australia

1300 301 755  
[sales@kattsafe.com.au](mailto:sales@kattsafe.com.au)  
[kattsafe.com.au](https://kattsafe.com.au)